



Keith  
Ashton

Fen Close, Shenfield  
Brentwood





## 10 FEN CLOSE

Shenfield Brentwood, CM15 8SB

**\*\*Guide Price £650,000 - £675,000\*\*** Welcome to this superbly presented four-bedroom family home located in the desirable area of Fen Close, Shenfield, Brentwood. This newly listed property boasts a spacious 1,262 sq ft of living space, perfect for a growing family. The south-facing rear garden is a delightful feature, providing a sunny retreat for outdoor activities. Another standout feature of this property is the garage and driveway, offering convenient parking options for you and your visitors. Situated in a quiet cul de sac with only ten properties, you can enjoy peace and tranquillity while still being close to local amenities and transport links.

- CUL DE SAC POSITION
- GARAGE & PRIVATE DRIVEWAY
- FOUR BEDROOM FAMILY HOME
- CLOSE TO LOCAL AMENITIES
- FRONT GARDEN
- SOUTH FACING REAR GARDEN
- DESIRABLE LOCATION
- SHENFIELD STATION WITHIN WALKING DISTANCE





## Description

Occupying a corner plot, the front garden wraps around the two sides of the house, offering a sense of serenity and privacy. The garage and driveway sit adjacent to the front garden whilst a gate leads to the rear. Internally, the porch opens into a most welcoming entrance lobby that provides access into the kitchen, lounge, ground floor WC and a wrap around staircase leading to the first floor.

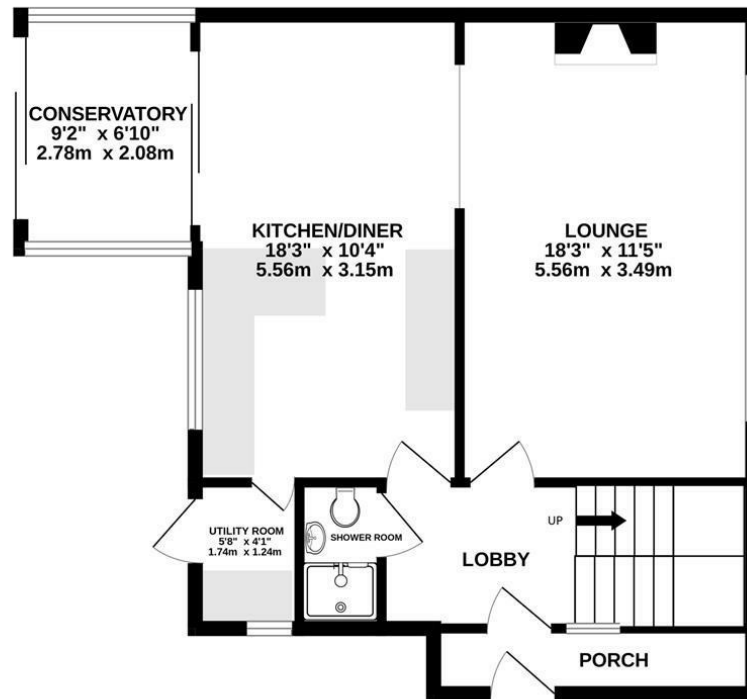
The ground floor provides a lovely flow to the property; as well as doors to the hallway, the lounge and kitchen have an opening so the rooms can be directly accessed from on another. The kitchen provides all your desired integrated goods, including a fridge, freezer and dishwasher. The kitchen is complemented by a utility room with space for a washing machine and tumble dryer, direct access into the garden can be found here, as well as from the conservatory. To the first floor are four well proportioned bedrooms as well as a four piece family bathroom suite, comprising of a WC, wash basin, bath and a separate shower cubicle.

Externally, there is a south facing garden which is mostly lawned and provides access into the rear of the garage. In front of the garage is a private driveway providing off street parking for multiple cars.

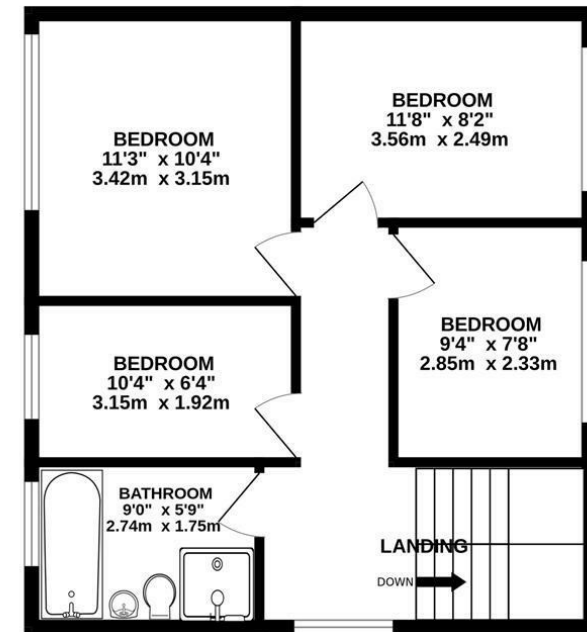




GROUND FLOOR  
740 sq.ft. (68.8 sq.m.) approx.

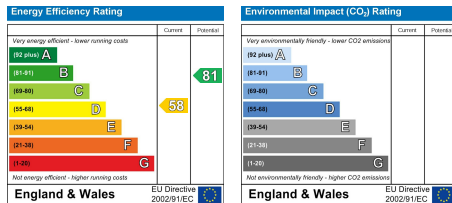


1ST FLOOR  
521 sq.ft. (48.4 sq.m.) approx.



TOTAL FLOOR AREA : 1262 sq.ft. (117.2 sq.m.) approx.

Measurements are approximate. Not to scale. Illustrative purposes only  
Made with Metropix ©2024



#### SERVICES:

Local Authority: Brentwood  
Council tax band: E  
Post code: CM15 8SB

#### VIEWING:

Strictly by prior arrangement with Keith Ashton Estate Agents

#### OPENING HOURS:

Monday to Friday: 8.45AM - 6.30PM | Saturdays: 9AM - 5.30PM | Sundays: 10AM - 2PM

**MORTGAGE INFORMATION:** We offer the additional facility of an in-house Independent Financial Adviser who will access all mortgage lenders with the purpose of providing you with the benefit of choice. For quotations or comparables please call 01277 260858 or visit our interactive website at [www.mortgagebusiness.net](http://www.mortgagebusiness.net)



We the Agent have not tested any apparatus, fittings or services for this property. The plot size is intended merely as a guide and has not been officially measured or verified by the Agent. Photographs are for illustration only and may depict items which are not for sale or included in the sale of the property. As part of the service we offer we may recommend ancillary services to you which we believe may help you with your property transaction. We wish to make you aware, that should you decide to use these services we will receive a referral fee. For full and detailed information please visit 'terms and conditions' on our website [www.keithashton.co.uk](http://www.keithashton.co.uk)

Brentwood  
Tel. 01277 260858

Village Office  
Tel. 01277 375757

Lettings Office  
Tel. 01277 202200

Explore more @ [www.keithashton.co.uk](http://www.keithashton.co.uk)